

JOB-MAN 2325 LF



Articulated quality mini loader with folding roof. A powerful, flexible, and simple machine for construction, civil engineering, contractors, agriculture, and gardening/landscaping. Own weight 2475 kg. Standard: 25 HP – 3 cylinders Perkins Engine 403J-17 Stage 5, Bosch Rexroth drive hydraulics. 100% differential lock. 2 speeds forward and reverse. Adjustable steering wheel. Hydraulic quick coupler – 2 powerful lift cylinders – 2 hydraulic outlets – 6-way valve – 5 LED work lights, 3 front and 2 rear. Front and rear driving lights. Height with folded roof 1755 mm. Parallel lift and the machine has a floating position. Standard tyres size 31x15.5x15. Supplied as standard with JOB-MAN attachment – can also be supplied with Euro and Trima attachments. FOPS/ROBS approved roof.

Lifting height:	2453 mm
Weight:	2475 kg
Breakout force:	1880 daN
Standard tire size:	31x15,5x15



Standard equipment:

- Differential lock.
- Hydraulic quick-change attachment
- 2 powerful hydraulic outlets – 6-way valve
- 2 lifting cylinders
- LED work lights, 4 lights
- Rotating beacon – with reverse warning sound
- Adjustable steering wheel
- Multifunctional joystick
- Comfortable adjustable seat and armrest

Technical Specifications:

Engine

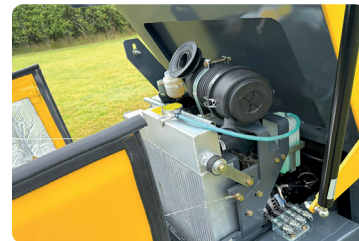
Engine	Perkins 403J-17
Max. power	18,5 kW/25 PS
Max. speed	2800 U/min

General

Capacity, shovel	0,3 - 0,48 m³
Diesel tank	35 l
Oil quantity, hydraulic	47 l/min

Optional:

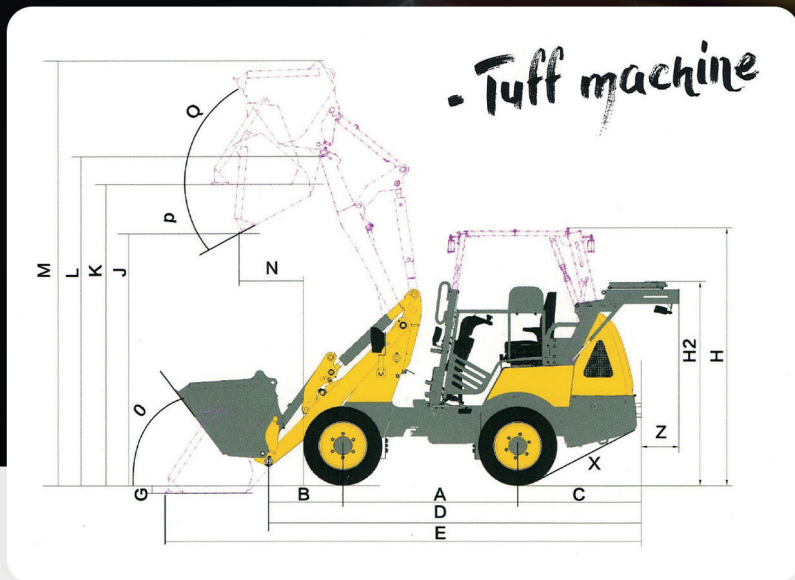
- Narrow wheels - tractor pattern 27x10.5-15
- Wide wheels - tractor pattern flat 31x15.5x15
- Wide wheels – Wide tractor pattern flat AS
- Counterweight – 94 kg



Performance

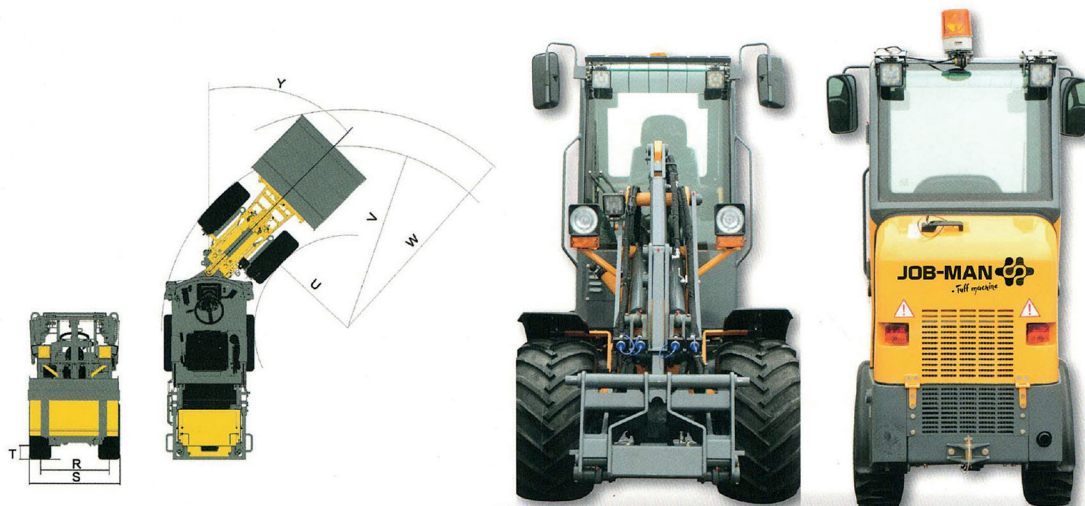
Max. lifting capacity	2480 kg
Pull force	16000N
Breakout force	1880daN
Operating weight	2475 kg
Lift speed (empty)	4,1
Lift and lowering speed (empty)	7,1
Tipping load in bucket, horizontal	1900 kg
Tipping load, pallet fork, horizontal	1900 kg
Tipping load in bucket, swiveled	1370 kg
Tipping load, pallet fork, swiveled	1280 kg

JOB-MAN 2325 LF



Dimensions:

A	Wheelbase	1699 mm	N	Dumping range	510 mm
B	Front axle for tool bolts	528 mm	O	Rear adjustment angle on ground	45°
C	Rear axle	1069 mm	P	Max. unloading angle	45°
D	Length without tools	3296 mm	Q	Rear adjustment angle (v/max. height)	47°
E	Length with bucket	4096 mm	R	Track width	820 mm
F	Height to seat	1240 mm	S	Width/turned wheel	1080/1340 mm
G	Bucket depth below ground clearance	47 mm	T	Ground clearance	202 mm
H	Height to cab roof	2230 mm	U	Inside turning radius	1106 mm
H2	Height with roof folded	1755 mm	V	Outside turning radius	2206 mm
J	Unloading height	1576 mm	W	Outside turning radius with bucket	2625 mm
K	Loading height	2244 mm	X	Articulated joint angle	45°
L	Maximum height to bucket pivot point	2453 mm	Y	Rear angle	28,8° (32,1°)
M	Total working height	3260 mm	Z	Additional length with roof folded	324 mm



JOB-MAN 
www.job-man.dk

JOB-MAN is a mini loader developed and designed in Denmark. The machines are manufactured according to European standards with Bosch Rexroth hydraulic components and Perkins/Yanmar engines. JOB-MAN compact loaders have been sold since 2006, with more than 1,800 machines in Europe.